

CONSTRUCTION BULLETIN # 08

Client: Abla Griffin Partnership
 Project Name: Moore West JH Classroom Addition
 Project Number: 2021-02932-00

February 14, 2023

Requested by: Owner
 Contractor:
 Salas O'Brien:



To: Mike Abla, Clay Griffin, AGP

This Construction Bulletin is issued to:

- Offer additional information for clarification or supplemental drawings for layout assistance.
- Request cost and time impact to initiate a change to the Contract Documents. Owner approval is required, do not commence with revisions unless directed in writing. Avoid Work in areas that may be affected by proposed change until approved or rejected. Once approved, forward Change Order documentation as required by the Contract Documents.
- Direct a required change in the Contract Documents. Proceed with change(s) as indicated. Forward Change Order documentation as required by the Contract Documents.
- Response to RFI _____.

Item No.	Description	Attachment
1	Refer to drawings for changes shown in clouds and deltas.	T000
2	Refer to drawings for changes shown in clouds and deltas.	T201
3	Refer to drawings for changes shown in clouds and deltas.	E501

END OF CB-08





RESPONSIBILITY MATRIX			
SCOPE ITEM	RESPONSIBILITY	NOTES	
COMMUNICATIONS - DIVISION 27	OFOI	CFCI	OFCI
CATEGORY 6 STRUCTURED CABLING SYSTEM	X		
VIDEO DISTRIBUTION SYSTEM - SPECIALSPACE	X		
AUDIO DISTRIBUTION SYSTEM - SPECIAL SPACE	X		
VIDEO DISTRIBUTION SYSTEM - INSTRUCTIONAL SPACE	X		
AUDIO DISTRIBUTION SYSTEM - INSTRUCTIONAL SPACE	X		
FLAT PANEL DISPLAYS	X		
FLAT PANEL DISPLAY MOUNTS	X		
INTERACTIVE DISPLAYS	X		
INTERACTIVE DISPLAY MOUNTS	X		
DIGITAL SIGNAGE	X		
BUILDING INTERCOMPA, BELL, AND CLOCK SYSTEM	X		
NETWORK EQUIPMENT			
-- MDF/IDF NETWORK EQUIPMENT	X		
-- VOIP TELEPHONES	X		
-- WIRELESS ACCESS POINTS	X		
-- UNINTERRUPTABLE POWER SUPPLIES (UPS)	X		
RACEWAY: CONDUIT, BACK BOXES, SLEEVES, ETC.	X		SEE NOTE 1.
ELECTRICAL POWER	X		SEE NOTE 1.
LIFE SAFETY AND SECURITY - DIVISION 28			
OFOI	OFCI	OFCI	
ACCESS CONTROL SYSTEM(ACS)	X		
INTRUSION DETECTION SYSTEM	X		
VIDEO SURVEILLANCE SYSTEM (VSS)			
-- VSS SERVERS	X		
-- VSS CAMERAS	X		
-- VSS PROGRAMMING	X		
-- VSS CABLING	X		SEE NOTE 2.
FIRE ALARM SMOKE DETECTION WITH VOICE EVACUATION	X		SEE NOTE 1.
RACEWAY: CONDUIT, BACK BOXES, SLEEVES, ETC.	X		SEE NOTE 1.
ELECTRICAL POWER	X		SEE NOTE 1.
OFOI - OWNER FURNISHED AND OWNER INSTALLED OFCI - CONTRACTOR FURNISHED AND CONTRACTOR INSTALLED OFCI - OWNER FURNISHED AND CONTRACTOR INSTALLED			
RESPONSIBILITY MATRIX NOTES: 1. BY DIVISION 28. 2. BY DIVISION 27.			

SUBSCRIPTS AND ABBREVIATIONS	
'WM'	INDICATES THAT THE DESIGNATED DEVICE IS TO BE WALL MOUNTED AT SPECIFIED HEIGHT OR IN COMPLIANCE WITH CODE REQUIREMENTS. ALL WALL MOUNTED HEIGHTS ARE TO BE CONFIRMED WITH THE PROJECT'S ARCHITECT PRIOR TO ROUGH-IN.
'WP'	INDICATES THAT THE DESIGNATED DEVICE SHALL BE WEATHER PROOF AND RATED FOR EXTERIOR CONDITIONS INSTALLATION.
'AC'	INDICATES THAT THE DESIGNATED DEVICE IS TO BE INSTALLED ABOVE THE COUNTERTOP; A NUMERIC VALUE SHALL REPLACE THE 'W' SYMBOL AND SHALL DESIGNATE THE SPECIFIC HEIGHT ABOVE COUNTER. ALL HEIGHTS ARE TO BE CONFIRMED WITH THE PROJECT'S ARCHITECT PRIOR TO ROUGH-IN.
'AFF'	INDICATES THAT THE DESIGNATED DEVICE IS TO BE INSTALLED ABOVE THE FINISHED FLOOR; A NUMERIC VALUE SHALL REPLACE THE 'W' SYMBOL AND SHALL DESIGNATE THE SPECIFIC HEIGHT ABOVE FINISHED FLOOR. ALL HEIGHTS ARE TO BE CONFIRMED WITH THE PROJECT'S ARCHITECT PRIOR TO ROUGH-IN.
'UC'	INDICATES THAT THE DESIGNATED DEVICE IS TO BE MOUNTED ON THE UNDERSIDE OF THE ELEVATED CANOPY.
'CM'	INDICATES THAT THE DESIGNATED DEVICE IS TO BE CORNER MOUNTED AT SPECIFIED HEIGHT. ALL WALL MOUNTED HEIGHTS ARE TO BE CONFIRMED WITH THE PROJECT'S ARCHITECT PRIOR TO ROUGH-IN. FIELD COORDINATE ELEVATION.

FIRE ALARM LEGEND	
[FACP]	FIRE ALARM CONTROL
[FAA]	FIRE ALARM ANNUNCIATOR PANEL
[NAC]	NOTIFICATION APPLIANCE CIRCUIT
NOTES:	
1. FIRE ALARM SYSTEM IS A PERFORMANCE BASED PER SPECIFICATIONS 28 46 00. CONTRACTOR TO REFERENCE SPECIFICATIONS FOR ADDITIONAL INFORMATION.	
2. A LICENSED FIRE ALARM PLANNING SUPERINTENDENT CERTIFIED TO A MINIMUM LEVEL 3. IN THE SUBFIELD OF FIRE ALARM SYSTEMS THROUGH THE NATIONAL INSTITUTE FOR CERTIFICATION IN ENGINEERING TECHNOLOGIES (NICET), SHALL PROVIDE PLANS AND CALCULATIONS FOR A MANUAL AND AUTOMATIC FIRE DETECTION AND ALARM SYSTEM TO COMPLY WITH THE BUILDING SPACE LAYOUT, BUILDING OCCUPANCY, CURRENT NFPA 72 LOCAL AND STATE CODE REQUIREMENTS, AND THE FIRE ALARM AND DETECTION SYSTEM SPECIFICATIONS.	
3. PROJECT SCOPE INCLUDES EXPANDING THE EXISTING FIRE ALARM SYSTEM. FIRE ALARM SYSTEM SHALL BE FULLY OPERATIONAL THROUGHOUT ALL PHASES OF CONSTRUCTION.	

NOTES TO CONTRACTOR	
1. EVERY SYMBOL SHOWN ON LEGEND MAY NOT APPEAR ON DRAWINGS. REFER TO GENERAL ELECTRICAL NOTES FOR WALL-MOUNTED DEVICE MOUNTING HEIGHTS.	
2. REFERENCE SPECIFICATIONS FOR MATERIALS AND METHODS.	
3. COMPLETE INSTALLATION OF ALL PRODUCTS SHALL BE IN COMPLIANCE WITH ALL CODES, INDUSTRY STANDARDS, COMMON PRACTICES AND MANUFACTURER'S INSTRUCTIONS.	
4. ALL EXTERIOR AND WALL MOUNTED CAMERA LOCATIONS AND MOUNTING HEIGHTS MUST BE COORDINATED WITH THE OWNER PRIOR TO ROUGH-IN. COORDINATION MEETINGS SHALL BE SCHEDULED THROUGH THE ARCHITECT'S PROJECT MANUAL.	

INTERCOM GENERAL NOTES	
1. THE SYSTEM INSTALLER SHALL PROPERLY SUPPORT ALL INSTALLED SYSTEM CABLING FROM AN APPROVED CABLE SUPPORT SYSTEM AS DETAILED IN SPECIFICATIONS. NO CABLING SHALL BE ROUTED AND TIED DIRECTLY TO BUILDING STEEL, CEILING GRID SUPPORT, CONDUIT, PIPING, OR DUCTWORK. THE CABLE SUPPORT SYSTEM SHALL BE DIRECTLY CONNECTED TO THE BUILDING'S STEEL JOIST. AT LOCATIONS WHERE THE BOTTOM OF THE JOIST IS MORE THAN 5' ABOVE THE CEILING, THE SYSTEM INSTALLER SHALL PROVIDE AND INSTALL THREADED ROD AND ALL REQUIRED MATERIALS TO CONNECT THE THREADED ROD TO THE BUILDING STEEL, AND THE CABLE SUPPORT SYSTEM TO THE THREADED ROD. CABLE PATHWAY SHALL NOT BE HIGHER THAN 5' ABOVE THE CEILING AT ANY LOCATIONS.	
2. ALL EXTERIOR AND WALL MOUNTED SPEAKERS SHALL BE MOUNTED AT 10'-0" UNLESS OTHERWISE NOTED.	
3. EXTERIOR SPEAKERS SHALL BE INDEPENDENTLY ZONED FROM INTERIOR SPEAKERS.	
4. ALL WALL MOUNTED CALL INITIATING DEVICES SHALL BE INSTALLED AT ADA HEIGHT, MATCHING THE HEIGHT OF THE INSTALLED LIGHT SWITCHES.	
5. PROVIDE AND INSTALL WALL MOUNTED VOLUME CONTROLS IN ALL OFFICES, CONFERENCE ROOMS, AND CLINICS.	
6. ALL VOLUME CONTROLS SHALL BE CONFIGURED WITH EMERGENCY CALL OVERRIDE, ALLOWING EMERGENCY ANNOUNCEMENTS TO BE HEARD DESPITE THE POSITION OF THE VOLUME CONTROL.	
7. ALL 25/70V SPEAKERS SHALL BE CONNECTED TO A STANDARD PUNCH DOWN BLOCK LOCATED NEAR HEAD END EQUIPMENT AND THEN CONNECTED TO HEAD END EQUIPMENT.	
8. CONTRACTOR TO TAP ALL EXTERIOR SPEAKERS AT 7 WATTS.	
9. ALL EXTERIOR AND WALL MOUNTED SPEAKERS SHALL BE MOUNTED AT 10'-0" UNLESS OTHERWISE NOTED.	

GENERAL NOTES	
1. ALL 120V POWER REQUIRED FOR THE FUNCTIONALITY OF EACH SYSTEM SHALL BE A DEDICATED CIRCUIT AND ON EMERGENCY POWER WHEN AVAILABLE. PROJECTS ELECTRICAL CONTRACTOR SHALL BE RESPONSIBLE FOR ALL POWER TO MAIN CONTROL PANELS, REMOTE POWER SUPPLIES AND ALL HEAD END EQUIPMENT. SYSTEM INSTALLERS SHALL COORDINATE LOCATIONS AND CONNECTIONS WITH THE PROJECT'S ELECTRICAL CONTRACTOR.	
2. THE PROJECTS ELECTRICAL CONTRACTOR SHALL BE RESPONSIBLE FOR ALL CONDUITS, FLOOR BOX, BACK BOXES, JUNCTION BOXES, RACEWAYS, AND SLEEVES REQUIRED TO ESTABLISH CLEAR PATHWAYS FOR ALL SYSTEMS. ALL CONDUITS, SLEEVES, BOXES, AND RACEWAYS SHALL BE PROPERLY SIZED TO MAINTAIN A 40% MAXIMUM FILL RATIO. THE INSTALLER FOR EACH SYSTEM SHALL PROVIDE THE ELECTRICAL CONTRACTOR WITH SHOP DRAWINGS INDICATING LOCATIONS AND SIZES OF CONDUITS BEYOND THOSE SHOWN ON THE CONTRACT DOCUMENTS.	
3. ALL EXPOSED SYSTEMS WIRING OR WIRING ROUTING ACROSS NON-ACCESSIBLE CEILINGS SHALL BE ROUTED IN CONDUIT, PROVIDED AND INSTALLED BY THE PROJECTS ELECTRICAL CONTRACTOR. SIZE CONDUIT AS REQUIRED TO ROUTE SYSTEMS WITH 40% CABLE FILL RATIO. MINIMUM CONDUIT SIZE SHALL BE 3/4".	
4. EACH SYSTEM INSTALLER SHALL BE RESPONSIBLE FOR ENSURING ALL EXTERIOR WALL PENETRATIONS ARE PROPERLY SEALED TO PREVENT ANY MOISTURE FROM ENTERING BUILDING.	
5. NO CONDUITS SHALL BE INSTALLED ON THE EXTERIOR OF THE BUILDING. IF EXTERIOR CONDUITS ARE REQUIRED FOR A COMPLETE INSTALLATION, EACH SYSTEM CONTRACTOR SHALL COORDINATE WITH THE PROJECTS CONSULTANT PRIOR TO ANY ROUGH-IN.	
6. EACH SYSTEM INSTALLER SHALL PROVIDE AND INSTALL PROTECTIVE BUSHINGS ON ALL CONDUIT SUBS AND SLEEVES TO PREVENT CABLE DAMAGE. BUSHING TO BE INSTALLED PRIOR TO CABLE INSTALLATION. CUTTING BUSHING AND INSTALLING AFTER CABLE IS INSTALLED WILL NOT BE EXCEPTED.	
7. ALL CABLE SHALL BE ROUTED DOWN CORRIDORS, PARALLEL AND PERPENDICULAR TO THE BUILDING WALLS AND STRUCTURE. CABLE TO EACH DEVICE SHALL BRANCH OFF OF A MAIN CORRIDOR TRUNK. ROUTING CABLES THROUGH CLASSROOMS, OFFICES, STORAGE ROOMS, RESTROOMS OR ANY TYPE OF ROOM OTHER THAN A CORRIDOR WILL NOT BE ACCEPTED. ENTER ALL ROOMS ABOVE THE ASSOCIATED ROOM DOORWAY.	

TECHNOLOGY GENERAL NOTES	
1. CONTRACTOR SHALL COORDINATE WITH THE SYSTEM ENGINEER PRIOR TO THE INSTALLATION OF BACKS AND RACK EQUIPMENT. BACKS AND RACKS SHALL BE PERMANENTLY INSTALLED WITHOUT WRITTEN APPROVAL OF THE PROPOSED LOCATIONS.	
2. THE SELECTED, INSTALLING CONTRACTOR MUST BE A CERTIFIED INTEGRATOR/INSTALLER AUTHORIZED BY THE SPECIFIED SYSTEM MANUFACTURER TO INSTALL THE CABLE PLANT AND CONNECTIVITY PRODUCTS. REFER TO SPECIFICATIONS FOR PRODUCT TYPE AND DESCRIPTION.	
3. SYSTEM WIRING AND EQUIPMENT INSTALLATION SHALL BE IN ACCORDANCE WITH GOOD ENGINEERING PRACTICES AS ESTABLISHED BY ANSI/EIA/TIA, BICSI, AND THE NEC.	
4. ALL WIRING SHALL MEET ALL STATE AND LOCAL ELECTRICAL CODES.	
5. ALL TELECOMMUNICATIONS SYSTEMS EQUIPMENT AND MOUNTING LOCATIONS SHALL BE IN COMPLIANCE WITH ADA ACCESSIBILITY STANDARDS.	
6. ALL INDUSTRY STANDARD CATEGORY 6 CABLING PRACTICES MUST BE FOLLOWED FOR ALL DATA CABLING.	
7. ALL CABLES/WIRING ARE TO BE INSTALLED WITH A MINIMUM OF 12 INCHES OF SEPARATION FROM AC POWER CABLES, INTERCOM, FIRE ALARM, SECURITY CABLES IN ANY PARALLEL OPEN WIRE RUN.	
8. ALWAYS CROSS OTHER SYSTEM CABLES AT A 90 DEGREE ANGLE.	
9. ALL CABLES AND TERMINATION COMPONENTS SHALL BE MACHINE LABELED AT BOTH ENDS. LABEL ALL CABLES PER TS DRAWINGS AND/OR SPECIFICATIONS. FINAL CABLE/OUTLET IDENTIFICATION LABELS SHALL BE COORDINATED WITH THE OWNER AND ENGINEER.	
10. CONTRACTOR TO PROVIDE LIGHTNING PROTECTION ON ALL COMMUNICATION CABLE BETWEEN BUILDINGS.	
11. ALL EXPOSED CABLING ROUTED IN PLENUM SHALL BE PLENUM-RATED. ALL NON PLENUM-RATED CABLING INSTALLED IN PLENUM SPACES SHALL BE INSTALLED IN CONDUIT.	
12. NO TERMINATION OR SPLICES SHALL BE INSTALLED IN OR ABOVE CEILINGS UNLESS NOTED NOTED OTHERWISE.	
13. CONTRACTOR SHALL MAINTAIN WALL RATING WITH PROPER FIRE BLOCKING METHODS.	
14. ALL CABLE INSTALLED SHALL ROUTE TO THE CENTER OF THE ROOM IN WHICH IT SERVES AND THEN TO THE OUTLET LOCATION IT IS INTENDED FOR. EACH CABLE SHALL HAVE A 10' SERVICE LOOP AT THE CENTER OF EACH ROOM AND A 3' SERVICE LOOP ABOVE EACH OUTLET LOCATION.	
16. PROVIDE AND INSTALL ONE (1) CATEGORY 6 CABLE TO EACH VIDEO SURVEILLANCE CAMERA ON THE ENTIRE PROJECT. REFERENCE VIDEO SURVEILLANCE LEGEND, NOTES, FLOOR PLANS, DETAILS, AND SCHEDULE.	
17. PROVIDE AND INSTALL ONE (1) CATEGORY 6 CABLE TO THE BUILDING'S ACCESS CONTROL HEAD END PANEL. TERMINATION OF THIS CABLE SHALL BE COORDINATED WITH THE SYSTEM INSTALLER.	
18. PROVIDE AND INSTALL ONE (1) CATEGORY 6 CABLE TO THE BUILDING'S INTRUSION DETECTION PANEL. TERMINATION OF THIS CABLE SHALL BE COORDINATED WITH THE SYSTEM INSTALLER.	
19. PROVIDE AND INSTALL ONE (1) CATEGORY 6 CABLE TO EACH LIGHTING CONTROL HUB ON THE ENTIRE PROJECT. COORDINATE EXACT QUANTITY AND LOCATIONS WITH THE LIGHTING CONTROL SYSTEM INSTALLER. CONTRACTOR TO ASSUME A MINIMUM OF TEN (10) PER PROJECT.	
20. PROVIDE AND INSTALL TWO (2) CATEGORY 6 DATA CIRCUITS TO EACH FSD (ALL VARIATIONS OF), CMP, WMP, AND DS ON THE ENTIRE PROJECT. COORDINATE ANY DISCREPANCIES WITH ENGINEER.	
21. PROVIDE AND INSTALL ONE (1) CATEGORY 6 DATA CIRCUIT TO THE LOCAL AIR UNIT CONTROLLER IN EACH MDF AND IDF.	
22. PROVIDE AND INSTALL ONE (1) CATEGORY 6 DATA CIRCUIT TO EACH ACCESS CONTROL VIDEO DOOR STATION AND MASTER STATION ON THE ENTIRE PROJECT. COORDINATE EXACT LOCATION AND TERMINATION REQUIREMENTS WITH THE DOOR STATION INSTALLER, PRIOR TO INSTALLATION.	
23. ALL CEILING MOUNTED DEVICES SHALL BE INSTALLED ON STAIN RESISTANT CEILING TILES.	

AUDIO/VIDEO LEGEND	
'AV-#'	INDICATES THAT THE DESIGNATED TECHNOLOGY IS INTENDED FOR AN AUDIO/VIDEO (AV) INPUT. CONTRACTOR TO PROVIDE AND INSTALL A FLOOR MOUNTED OR WALL MOUNTED BOX AS INDICATED. (1) 1/2" CONDUIT AND (1) 1" CONDUITS FROM THE BOX TO THE NEAREST PLENUM ACCESSIBLE CEILING WITHIN THE SAME ROOM. ALL FLOOR AND WALL MOUNTED BOXES SHALL BE A MINIMUM OF 2-GANGS. *# - WHEN REPLACED WITH A '1' (AV-1) ONLY, THE OUTLET SHALL BE A STANDALONE LOCAL INPUT TIED TO A LOCAL VIDEO DISPLAY (FSD, CMP, WMP, AV-2, ETC.). THIS OUTLET WILL NOT BE ASSOCIATED WITH ANY SYSTEM FOR ROUTING TO DISPLAYS LOCATED IN ANY OTHER PORTION OF THE PROJECT. IF NOT REPLACED WITH A '1' SEE THE NOTES AT THE BOTTOM OF THE LEGEND FOR ADDITIONAL INSTRUCTIONS.
'FSD-#'	INDICATES THE LOCATION OF A FLAT PANEL VIDEO DISPLAY. CONTRACTOR TO PROVIDE AND INSTALL TWO (2) CATEGORY 6 UTP NETWORK CABLE TO ALL LOCATIONS SHOWN ON THE ENTIRE PROJECT. *# - WHEN REPLACED WITH A '1' (FSD-1) ONLY, THE OUTLET SHALL BE A STANDALONE AND ONLY HAVE THE CATEGORY 6 CABLE ROUTED TO IT, FROM THE MDF/IDF SERVING THE DEVICES AREA ROOM. *# - WHEN REPLACED WITH A '2' (FSD-2) ONLY, THE OUTLET SHALL HAVE THE CATEGORY 6 CABLE ROUTED TO IT, FROM THE MDF/IDF SERVING THE DEVICES AREA, AND THE CABLING FROM THE ASSOCIATED AV-1. *# - WHEN NOT REPLACED WITH A '1' OR '2', SEE THE "NOTES" SECTION AT THE END OF THIS LEGEND. EACH FSD OUTLET SHALL BE A 2-GANG BOX AND TWO (2) 1/2" CONDUITS STUBBING INTO THE ROOMS ACCESSIBLE CEILING. PROVIDE ONE DOUBLE-GANG FACEPLATE WITH TWO (2) DECORA PORTS. PROVIDE A DECORA STYLE INSERT THAT ACCEPTS THE STYLE OF DATA JACK BEING USED FOR STRUCTURED CABLING. WHEN THERE IS A LOCAL AV INPUT ASSOCIATED WITH THE DISPLAY, PROVIDE A DECORA INSERT THAT CONFORMS WITH THE SYSTEMS SPECIFIED. OTHERWISE PROVIDE A BLANK INSERT IN THE SECOND PORT.
'VD'	INDICATES THE LOCATION OF A WALL MOUNTED, INTERACTIVE VIDEO DISPLAY. PROVIDE AND INSTALL AV CABLE FROM THE ASSOCIATED AV-1 AS PER SPECIFICATIONS. RACEWAY SHALL CONSIST OF 2-GANG BOX AND ONE (1) 1/2" CONDUITS STUBBING INTO THE ROOMS ACCESSIBLE CEILING. PROVIDE ONE DOUBLE-GANG FACEPLATE WITH TWO (2) DECORA PORTS. PROVIDE A DECORA STYLE INSERT THAT ACCEPTS THE STYLE OF DATA JACK BEING USED FOR STRUCTURED CABLING. WHEN THERE IS A LOCAL AV INPUT ASSOCIATED WITH THE DISPLAY, PROVIDE A DECORA INSERT THAT CONFORMS WITH THE SYSTEMS SPECIFIED. OTHERWISE PROVIDE A BLANK INSERT IN THE SECOND PORT.
'AVC-#'	INDICATES THE LOCATION OF AN AUDIO/VIDEO CONTROL PLATE. RACEWAY SHALL CONSIST OF ONE (1) A BACK BOX WITH A 1" CONDUIT ROUTING INTO THE ACCESSIBLE CEILING SPACE WITHIN THE SAME ROOM. AV SYSTEM INSTALLER TO COORDINATE THE CONTROL BACK BOX SIZE REQUIREMENT WITH THE PROJECTS ELECTRICAL CONTRACTOR.
'S'	LOCAL INSTRUCTIONAL SPACE PRESENTATION SPEAKER. REFERENCE SPECIFICATIONS FOR ADDITIONAL INFORMATION.
'CS-#'	INDICATES THE LOCATION OF A STREAMING CAMERA. CONTRACTOR TO PROVIDE AND INSTALL TWO (2) CATEGORY 6 UTP NETWORK CABLE TO ALL LOCATIONS SHOWN ON THE ENTIRE PROJECT. REFERENCE SPECIFICATION FOR ADDITIONAL INFORMATION.
NOTES: A. IN THE EVENT THAT "W" IS NOT DEFINED IN THE OUTLET DESCRIPTION, THE DEVICE SHALL BE CONSIDERED A STANDALONE DEVICE, SERVING THE SYSTEM WITHIN THE SAME SPACE OR THE FOLLOWING SHALL APPLY: *# - UNLESS SPECIFICALLY NOTED OTHERWISE, THE FOLLOWING SHALL APPLY TO EACH DEVICE SHOWN ON THE ENTIRE PROJECT. *# - SHALL BE REPLACED WITH ALPHABETICAL CHARACTERS THAT SHALL INDICATE THE SPECIFIC VENUE THAT THE DEVICE IS ASSOCIATED WITH. *# - SHALL BE REPLACED WITH A NUMERIC VALUE THAT SHALL IDENTIFY THE SPECIFIC DEVICE WITHIN THE SPECIFIC VENUE. B. THE AUDIO/VIDEO SYSTEM INTEGRATOR SHALL COORDINATE ALL BOX AND CONDUIT SIZE REQUIREMENTS PRIOR TO ROUGH-IN BY THE PROJECTS ELECTRICAL CONTRACTOR. C. REFERENCE SHEET MATRIX AND PROJECT SPECIFICATIONS FOR INSTRUCTIONS REGARDING THE PROVIDING AND INSTALLATION OF VIDEO DISPLAYS, PROJECTORS, SCREENS, MOUNTS, AND LIFTS.	
INTERCOM/CLOCK LEGEND	
'S'	PROVIDE AND INSTALL A 2/2" TILE REPLACEMENT, CEILING MOUNTED, 25/70V INTERCOM SPEAKER. SPEAKER TO BE INSTALLED FLUSH WITH CEILING UNLESS NOTED OTHERWISE.
'CS'	PROVIDE AND INSTALL A 12" CEILING MOUNTED, 25/70V INTERCOM SPEAKER THAT IS TO BE FLUSH MOUNTED IN A SOLID CEILING ENVIRONMENT. SYSTEM INSTALLER TO PROVIDE BACK CANS TO PROJECTS ELECTRICAL CONTRACTOR FOR INSTALLATION. ON PROJECTS WITHOUT AN ELECTRICAL CONTRACTOR THE INSTALLER SHALL BE RESPONSIBLE FOR THE COMPLETE INSTALLATION INCLUDING BACK CANS AND ASSOCIATED RACEWAY.
'CS'	INTERIOR WALL MOUNTED, 25/70V INTERCOM SPEAKER INTERCOM SPEAKER. SPEAKER TO BE INSTALLED FLUSH WITH WALL UNLESS NOTED OTHERWISE. SYSTEM INSTALLER TO PROVIDE BACK CANS TO PROJECTS ELECTRICAL CONTRACTOR FOR INSTALLATION. ON PROJECTS WITHOUT AN ELECTRICAL CONTRACTOR THE INSTALLER SHALL BE RESPONSIBLE FOR THE COMPLETE INSTALLATION INCLUDING BACK CANS AND ASSOCIATED RACEWAY.
'CS'	EXTERIOR WALL MOUNTED INTERCOM PAGING HORN. PAGING HORN SHALL BE TAPPED AT 7 WATTS UNLESS NOTE OTHERWISE. SYSTEM INSTALLER TO PROVIDE BACK CANS TO PROJECTS ELECTRICAL CONTRACTOR FOR INSTALLATION. ON PROJECTS WITHOUT AN ELECTRICAL CONTRACTOR THE INSTALLER SHALL BE RESPONSIBLE FOR THE COMPLETE INSTALLATION INCLUDING BACK CANS AND ASSOCIATED RACEWAY. REFERENCE SHEET SPECIFICATIONS FOR MORE INFORMATION.
'VC'	PROVIDE AND INSTALL A WALL MOUNTED VOLUME CONTROL WITH EMERGENCY ANNOUNCEMENT PRIORITY OVERRIDE. VOLUME CONTROL SHALL BE INSTALLED WITH LEVEL ZERO ATTENUATING AT NO LESS THAN 10DB. DEVICE TO BE MOUNTED AT +48" AFF.
'CB'	PROVIDE AND INSTALL A WALL MOUNTED, INTERCOM CALL BUTTON DEVICE TO BE MOUNTED AT +48" AFF
'ACS'	PROVIDE AND INSTALL AN IP ADMINISTRATIVE CALL STATION. DEVICE OUTLET TO BE INSTALLED IN THE WORKSTATION KNEE SPACE AND THE DEVICE SHALL RESIDE ON THE WORKSTATION SURFACE.
'C'	INDICATES THE LOCATION OF A SINGLE FACE SECONDARY TIME CLOCK. REFERENCE SPECIFICATIONS FOR ADDITIONAL INFORMATION. PROVIDE CABLING AS REQUIRED FOR THE TYPE OF CLOCK BEING INSTALLED: - IP BASED CLOCKS - PROVIDE ONE (1) CATEGORY 6 CABLE PER FACE - 12V/24V CLOCK TO BE POWERED VIA A CLOCK POWER SUPPLY AND CONNECTED TO THE SPECIFIED MASTER CLOCK. - 120V CLOCK SHALL BE POWERED VIA 120V ELECTRICAL OUTLET AT THE DEVICE LOCATION AND CONNECTED TO THE SPECIFIED MASTER CLOCK.
'CZ'	INDICATES THE LOCATION OF A DUAL FACE SECONDARY TIME CLOCK. REFERENCE SPECIFICATIONS FOR ADDITIONAL INFORMATION. PROVIDE CABLING AS REQUIRED FOR THE TYPE OF CLOCK BEING INSTALLED: - IP BASED CLOCKS - PROVIDE ONE (1) CATEGORY 6 CABLE PER FACE - 12V/24V CLOCK TO BE POWERED VIA A CLOCK POWER SUPPLY AND CONNECTED TO THE SPECIFIED MASTER CLOCK. - 120V CLOCK SHALL BE POWERED VIA 120V ELECTRICAL OUTLET AT THE DEVICE LOCATION AND CONNECTED TO THE SPECIFIED MASTER CLOCK.

ACCESS CONTROL LEGEND	
'CR'	WALL OR MULLION MOUNTED ACCESS CONTROL PROXIMITY CARD READER.
'CR'	DOOR MOUNTED ACCESS CONTROL PROXIMITY CARD READER THAT IS INTEGRATED INTO THE DOOR HARDWARE.
'DR'	DOOR RELEASE BUTTON
'ACP'	DESIGNATES THE LOCATION OF THE ACCESS CONTROL SYSTEM, CONTROL PANEL. ELECTRICAL CONTRACTOR TO PROVIDE 120V POWER TO PANEL. PROVIDE NETWORK CABLE TO PANEL AND COORDINATE WITH THE OWNERS TECHNOLOGY DEPARTMENT ON ACQUIRING AN IP ADDRESS.
'ES'	WALL OR MULLION MOUNTED, 2-WAY AUDIO/VIDEO INTERCOM DOOR STATION.
'ES'	DOOR MOUNTED, 2-WAY AUDIO/VIDEO INTERCOM DOOR STATION.
'MS'	2-WAY AUDIO/VIDEO INTERCOM MASTER STATION.
'FB'	ADA AUTO DOOR OPEN BUTTON. SHOWN FOR REFERENCE ONLY. BUTTON AND AUTO DOOR OPERATOR PROVIDED AND INSTALLED BY THE DOOR SYSTEM INSTALLER.
'DC'	DPDT MAGNETIC DOOR CONTACT/DOOR POSITION SENSOR. FLUSH MOUNTED IN DOOR FRAME, UNLESS NOTED OTHERWISE.
'LD'	LOCKDOWN BUTTON
NOTES: 1. REFERENCE ACCESS CONTROL SCHEDULE, DETAILS, AND DIVISION 28 SPECIFICATIONS FOR ADDITIONAL INFORMATION AND REQUIREMENTS	

VIDEO SURVEILLANCE LEGEND	
'S-#'	4-SENSOR CAMERA WITH 3-SENSOR PROVIDING A 270 DEGREE AREA OF VIEW AND 1-SENSOR PROVIDING COVERAGE DIRECTLY UNDERNEATH THE CAMERA LOCATION. # TO BE REPLACED WITH AN ALPHABETICAL TEXT DEPICTING THE CAMERA TYPE AS ASSOCIATED WITH THE VIDEO SURVEILLANCE CAMERA SCHEDULE.
'S-#'	4-SENSOR CAMERA, 4-SENSORS TO PROVIDE A 360 DEGREE AREA OF VIEW. # TO BE REPLACED WITH AN ALPHABETICAL TEXT DEPICTING THE CAMERA TYPE AS ASSOCIATED WITH THE VIDEO SURVEILLANCE CAMERA SCHEDULE.
'S-#'	2-SENSOR CAMERA. EACH SENSOR SHALL BE POSITIONED TO PROVIDE COVERAGE IN THE DIRECTION SHOWN. # TO BE REPLACED WITH AN ALPHABETICAL TEXT DEPICTING THE CAMERA TYPE AS ASSOCIATED WITH THE VIDEO SURVEILLANCE CAMERA SCHEDULE.
'S-#'	1-SENSOR CAMERA, SENSOR SHALL BE POSITIONED TO PROVIDE COVERAGE IN THE DIRECTION SHOWN. # TO BE REPLACED WITH AN ALPHABETICAL TEXT DEPICTING THE CAMERA TYPE AS ASSOCIATED WITH THE VIDEO SURVEILLANCE CAMERA SCHEDULE.
NOTES: 1. REFERENCE VIDEO SURVEILLANCE SCHEDULE AND DIVISION 28 SPECIFICATIONS FOR ADDITIONAL INFORMATION AND REQUIREMENTS	

SECURITY GENERAL NOTES	
1. THE SECURITY SYSTEM INSTALLERS SHALL BE RESPONSIBLE FOR CONNECTING ALL APPLICABLE SYSTEM EQUIPMENT TO THE OWNERS NETWORK.	
2. THE SYSTEM INSTALLER SHALL PROPERLY SUPPORT ALL INSTALLED SYSTEM CABLING FROM AN APPROVED CABLE SUPPORT SYSTEM AS DETAILED IN SPECIFICATIONS. NO CABLING SHALL BE ROUTED AND TIED DIRECTLY TO BUILDING STEEL, CEILING GRID SUPPORT, CONDUIT, PIPING, OR DUCTWORK. THE CABLE SUPPORT SYSTEM SHALL BE DIRECTLY CONNECTED TO THE BUILDING'S STEEL JOIST. AT LOCATIONS WHERE THE BOTTOM OF THE JOIST IS MORE THAN 5' ABOVE THE CEILING, THE SYSTEM INSTALLER SHALL PROVIDE AND INSTALL THREADED ROD AND ALL REQUIRED MATERIALS TO CONNECT THE THREADED ROD TO THE BUILDING STEEL AND THE CABLE SUPPORT SYSTEM TO THE THREADED ROD. CABLE PATHWAY SHALL NOT BE HIGHER THAN 5' ABOVE THE CEILING AT ANY LOCATIONS.	
3. SECURITY CAMERA SYSTEM INSTALLER SHALL PROVIDE A CEILING MOUNTED INSTALLATION KIT RECOMMENDED BY THE MANUFACTURER OF THE CAMERA. EACH CEILING MOUNTED CAMERA KIT SHALL HAVE A SUPPORT WIRE ATTACHED TO THE BUILDING'S STRUCTURE TO PREVENT THE CAMERA FROM DROPPING TO THE FLOOR AT ANY TIME. AT NO POINT SHALL THE WEIGHT OF THE CEILING MOUNTED SECURITY CAMERA BE SUPPORTED BY THE CEILING GRID SYSTEM OR CEILING TILES. ALL CEILING MOUNTED CAMERAS SHALL BE FLUSH MOUNTED.	
4. ALL EXTERIOR AND WALL MOUNTED CAMERA LOCATIONS AND MOUNTING HEIGHTS MUST BE COORDINATED WITH THE OWNER PRIOR TO ROUGH-IN. COORDINATION MEETINGS SHALL BE SCHEDULED THROUGH THE ARCHITECT'S PROJECT MANAGER.	
5. PROVIDE AND INSTALL MAGNETIC DOOR CONTACT AT ALL ROOF HATCHES ON THE ENTIRE PROJECT. CONTACTS TO BE CONNECTED TO THE BUILDING'S INTRUSION DETECTION SYSTEM.	
COORDINATE MONITORING REQUIREMENTS WITH THE INSTALLER FOR EACH SYSTEM AND THE OWNER. PROGRAM SYSTEM TO ALERT THE OWNER DESIGNATED PERSONNEL UPON A MONITORED ALARM EVENT	

LOCAL SOUND SYSTEM LEGEND	
'S-#'	VENUE SPECIFIC LOCAL SOUND SYSTEM SPEAKER. # TO BE REPLACED WITH NUMERIC VALUE INDICATING THE POSITION NUMBER OF THE VENUE SPECIFIC DEVICE.
'SC-#'	VENUE SPECIFIC LOCAL SOUND SYSTEM CONTROL PLATE. # TO BE REPLACED WITH NUMERIC VALUE INDICATING THE POSITION NUMBER OF THE VENUE SPECIFIC DEVICE.
'M-#'	VENUE SPECIFIC LOCAL SOUND SYSTEM MICROPHONE INPUT. # TO BE REPLACED WITH NUMERIC VALUE INDICATING THE POSITION NUMBER OF THE VENUE SPECIFIC DEVICE.
'AM-#'	VENUE SPECIFIC LOCAL SOUND SYSTEM 3.5MM AUXILIARY INPUT AND BLUETOOTH MIXER. # TO BE REPLACED WITH ALPHANUMERIC TEXT INDICATING THE ASSOCIATED VENUE AND MIXER NUMBER. CONTRACTOR TO PROVIDE AND INSTALL A RECESSED ENCLOSURE WITH FLUSH MOUNTED, LOCKABLE DOOR. DEVICE TO BE MOUNTED AT + 42" AFF.
'RACK'	INDICATED THE LOCATION OF THE VENUE SPECIFIC LOCAL SOUND SYSTEM HEAD END RACK. AMPLIFIERS, DSPS, AND ALL OTHER HEAD END EQUIPMENT SHALL BE INSTALLED IN THIS RACK/CABINET.
'WA'	WIRELESS MICROPHONE ANTENNA. REFERENCE SPECIFICATIONS FOR MORE INFORMATION.
'ALA'	ASSISTED LISTENING ANTENNA. REFERENCE SPECIFICATIONS FOR MORE INFORMATION.
NOTES: 1. REFERENCE SPECIFICATIONS FOR ADDITIONAL INFORMATION AND REQUIREMENTS	

TECHNOLOGY LEGEND	
'DF'	DESIGNATES THAT THE ASSOCIATED TECHNOLOGY OUTLET IS INTENDED FOR THE USE OF A NETWORK CONNECTION. THE "W" SHALL BE REPLACED WITH NUMERIC TEXT THAT IDENTIFIES THE TOTAL NUMBER OF CATEGORY 6 NETWORK CABLES THAT ARE TO BE INSTALLED AT THE TECHNOLOGY OUTLET LOCATION. CONTRACTOR TO PROVIDE AND INSTALL CATEGORY 6 NETWORK CABLES, CATEGORY 6 CONNECTORS, STAINLESS STEEL FACEPLATES WITH IDENTIFICATION WINDOWS, LABELS, BLANK INSERTS, AND ANY OTHER MATERIALS REQUIRED TO FURNISH A COMPLETE FUNCTIONAL AND TESTED OUTLET LOCATION. ALL FACEPLATES PROVIDED SHALL CONTAIN A MINIMUM 4-PORTS AND SHALL BE APPROPRIATELY SIZED TO ACCOMMODATE THE NUMBER OF CIRCUITS BEING INSTALLED AT THIS TECHNOLOGY OUTLET LOCATION. MAXIMUM OF SIX(6) DATA CABLES PER OUTLET.
'W'	DESIGNATES THAT THE ASSOCIATED TECHNOLOGY OUTLET IS INTENDED FOR THE USE OF A WALL MOUNTED TELEPHONE CONNECTION. CONTRACTOR TO PROVIDE AND INSTALL (1) CATEGORY 6 NETWORK CABLE, (1) CATEGORY 6 CONNECTOR, STAINLESS STEEL WALL TELEPHONE FACEPLATE, LABELS, AND ANY OTHER MATERIALS REQUIRED TO FURNISH A COMPLETE FUNCTIONAL AND TESTED CIRCUIT AT EACH LOCATION SHOWN. CONTRACTOR SHALL MOUNT THIS OUTLET AT ADA HEIGHT (MATCH LIGHT SWITCH HEIGHT) AND COORDINATE ALL FINAL LOCATIONS WITH OTHER TRADES ON THE PROJECT TO VERIFY THAT THE LOCATION OF THE OUTLET MAINTAINS 8" OF CLEARANCE ON ALL FOUR SIDES OF THE BACK BOX. OUTLETS SHALL REMAIN CLEAR OF ROOM DOORS, CABINET DOORS, APPLIANCE DOORS, AND SLIDING DRAWERS.
'AP'	DESIGNATES THAT THE ASSOCIATED TECHNOLOGY OUTLET IS INTENDED FOR THE USE OF A WIRELESS ACCESS POINT CONNECTION. CONTRACTOR TO PROVIDE AND INSTALL (2)CATEGORY 6 NETWORK CABLE, (2) CATEGORY 6 CONNECTOR, (2) CAT 6 BISCUIT JACK FACEPLATE WITH IDENTIFICATION WINDOWS, LABELS, AND ANY OTHER MATERIALS REQUIRED TO FURNISH A COMPLETE FUNCTIONAL AND TESTED CIRCUIT AT EACH LOCATION SHOWN. REFERENCE SPECIFICATIONS FOR PATCH CABLE REQUIREMENTS.
'FF'	INDICATES THAT THE ASSOCIATED TECHNOLOGY OUTLET IS INTENDED FOR FURNITURE FEED, ALLOWING CABLING TO ROUTE INTO A MODULAR FURNITURE SYSTEM. CONDUIT SHALL BE SIZE TO ACCOMMODATE THE NUMBER CABLE ROUTING INTO TO THE FURNITURE SYSTEM.
'V#'	VOICE OUTLET WITH CABLE AND TERMINATION AS INDICATED.
NOTES: REFERENCE TECHNOLOGY GENERAL NOTES, PLAN KEYED NOTES, AND ALL OTHER SYSTEM LEGENDS/NOTES. THE STRUCTURED CABLING SYSTEM CONTRACTOR SHALL PROVIDE AND INSTALL CATEGORY 6/8A CABLE TO ALL SYSTEMS' EQUIPMENT REQUIRING NETWORK CONNECTIVITY.	

RACEWAY LEGEND	
'V'	INDICATES THE LOCATION OF A FLOOR MOUNTED BOX AND RACEWAY FOR LOW VOLTAGE. CONTRACTOR TO PROVIDE AND INSTALL A FLOOR BOX. EACH FLOOR BOX SHALL HAVE ONE (1) SINGLE GANG PORT WITH ONE (1) " CONDUIT/EVERY SIX(6) CATEGORY 6 OR FOUR(4) CATEGORY 6A CABLES) AND ONE (1) DOUBLE GANG PORT WITH ONE (1) 1/2" CONDUIT UNLESS NOTED OTHERWISE. ALL CONDUITS SHALL ROUTE FROM THE FLOOR BOX DIRECTLY TO THE WALL INDICATED AND STUB-UP INTO THE NEAREST ACCESSIBLE PLENUM CEILING.
'V'	INDICATES THE LOCATION OF A CEILING MOUNTED OUTLET. CONTRACTOR SHALL MOUNT THIS OUTLET AT +12" ABOVE THE CEILING AND COORDINATE ALL FINAL LOCATIONS WITH OTHER TRADES ON THE PROJECT TO VERIFY THAT THE LOCATION OF THE OUTLET MAINTAINS 12" OF CLEARANCE FROM THE FRONT OF THE FACEPLATE FOR OWNER ACCESS.
'V'	INDICATES THE LOCATION OF A NEW LOW VOLTAGE OUTLET. CONTRACTOR TO PROVIDE ONE (1) DOUBLE GANG BACK BOX WITH A SINGLE GANG REDUCER ONE (1) 1" CONDUIT STUBBING INTO THE NEAREST ACCESSIBLE PLENUM CEILING.
'V'	INDICATES THE LOCATION OF A NEW LOW VOLTAGE OUTLET. CONTRACTOR TO PROVIDE ONE (1) DOUBLE GANG BACK BOX WITH ONE (1) 1 1/2" CONDUITS STUBBING INTO THE NEAREST ACCESSIBLE PLENUM CEILING.
'V'	INDICATES THE LOCATION OF A NEW LOW VOLTAGE OUTLET. CONTRACTOR TO PROVIDE ONE (1) SINGLE GANG BACK BOX WITH ONE (1) 3/4" CONDUITS STUBBING INTO THE NEAREST ACCESSIBLE PLENUM CEILING.
NOTES: A. SYSTEM INSTALLER TO PROVIDE AND INSTALL A PLASTIC PROTECTIVE BUSHING ON ALL CONDUIT STUB-UP AND SLEEVES. PRIOR TO ROUTING CABLING IN CONDUIT, CUTTING BUSHING TO FIT ROUND INSTALLED CABLE WILL NOT BE ACCEPTED B. NO CONDUITS SHALL EXCEED FOR 40% MAXIMUM FILL RATIO. CONTRACTOR TO PROVIDE ADDITIONAL CONDUITS REQUIRED. C. ANY CONDUIT INSTALL FOR AUDIO/VIDEO SYSTEMS SHALL INCLUDE AT LEAST ONE (1) 1 1/4" CONDUIT.	

INTRUSION DETECTION LEGEND	
----------------------------	--

GENERAL NOTES

- A. COORDINATE ALL FINAL MOUNTING HEIGHTS, FOR WALL MOUNTED DEVICES, PRIOR TO ROUGH-IN. COORDINATE WITH ARCHITECT, OWNER AND ENGINEER.
- B. COORDINATE ALL CEILING DEVICE LOCATIONS WITH ARCHITECTURAL DRAWINGS AND INTERIOR DESIGN CONSULTANT (IF APPLICABLE) PRIOR TO ROUGH-IN.
- C. REFERENCE TECHNOLOGY PLANS, OVERALL PLANS, NOTES & LEGENDS, ELECTRICAL PLAN AND THEATRICAL PLANS FOR ADDITIONAL INFORMATION AND DEVICE/OUTLET LOCATIONS.
- D. CONTRACTOR TO COORDINATE ALL DROP LOCATIONS WITH FURNITURE. COORDINATE WITH ARCHITECT AND OWNER FOR MORE INFORMATION.

KEYED NOTES

1. REMOVE EXISTING CAMERA AND RETURN TO MPS TECHNOLOGY.
2. REMOVE EXISTING BELL.
3. REMOVE EXISTING INTERCOM PAGING HORN AND RETURN TO OWNER.

FIRE ALARM

- A. FIRE ALARM SYSTEM IS A PERFORMANCE BASED. CONTRACTOR TO REFERENCE SPECIFICATIONS FOR ADDITIONAL INFORMATION.
- B. A LICENSED FIRE ALARM PLANNING SUPERINTENDENT CERTIFIED TO A MINIMUM LEVEL 3, IN THE SUBFIELD OF FIRE ALARM SYSTEMS THROUGH THE NATIONAL INSTITUTE FOR CERTIFICATION IN ENGINEERING TECHNOLOGIES (NICET), SHALL PROVIDE PLANS AND CALCULATIONS FOR A MANUAL AND AUTOMATIC FIRE DETECTION AND ALARM SYSTEM TO COMPLY WITH THE BUILDING SPACE LAYOUT, BUILDING OCCUPANCY, CURRENT NFPA 72, LOCAL AND STATE CODE REQUIREMENTS, AND THE FIRE ALARM AND DETECTION SYSTEM SPECIFICATIONS.

NY
drawn by

NY
checked by

MARCH 2022
date

5 02/14/23 CB08

revisions
4 01/10/23 CB07

3 12/30/22 CB05

2 11/11/22 CB04

1 07/22/22 AD01

MOORE PUBLIC SCHOOLS
BOARD OF EDUCATION
MOORE, OKLAHOMA



CLASSROOM ADDITION
MOOREWEST
JUNIOR HIGH SCHOOL

sheet no:

T201

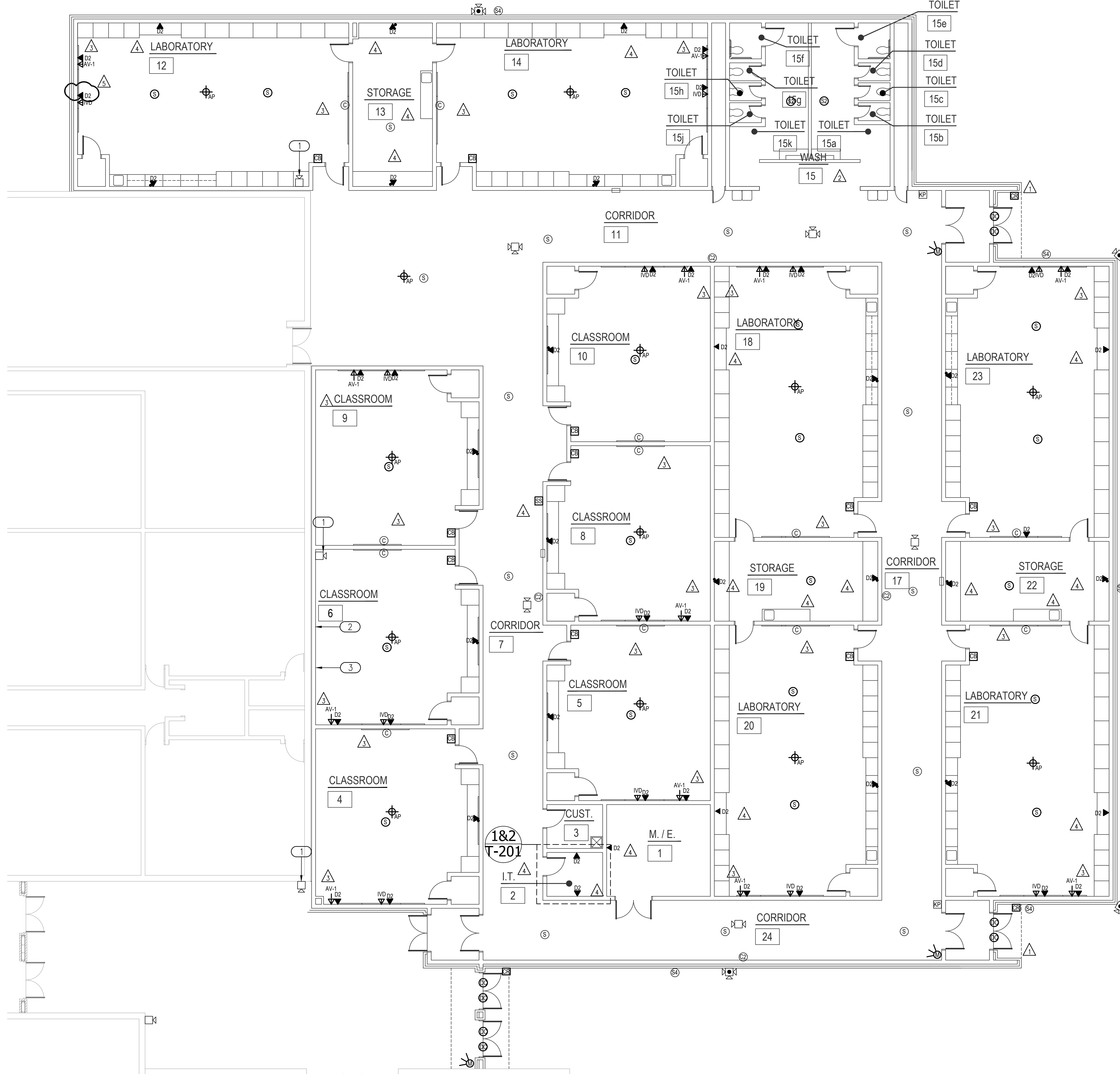
OWNERSHIP USE OF DOCUMENTS:

AGP EXPRESSLY RESERVES ITS
COPYRIGHT AND OTHER PROPERTY
RIGHTS OF ALL PLANS AND DRAWINGS
DESIGNED AND/OR PRODUCED. PLANS
AND DRAWINGS ARE NOT TO BE
REPRODUCED IN ANY FORM OR MANNER
WITHOUT THE EXPRESSED WRITTEN
CONSENT OF AGP.



2600 Van Buren St., Suite 2635
Norman, Oklahoma 73072
P: 405.364.9926 | CA#:7058 Expiration Date: 6/30/2023

Salas O'Brien Project No.: 2021-02932-00



NORTH



DW
drawn by
TVO
checked by
MARCH 2022
date
02/14/23 CB08
revisions

MOORE PUBLIC SCHOOLS
BOARD OF EDUCATION
MOORE, OKLAHOMA



CLASSROOM ADDITION
MOOREWEST
JUNIOR HIGH SCHOOL

sheet no:

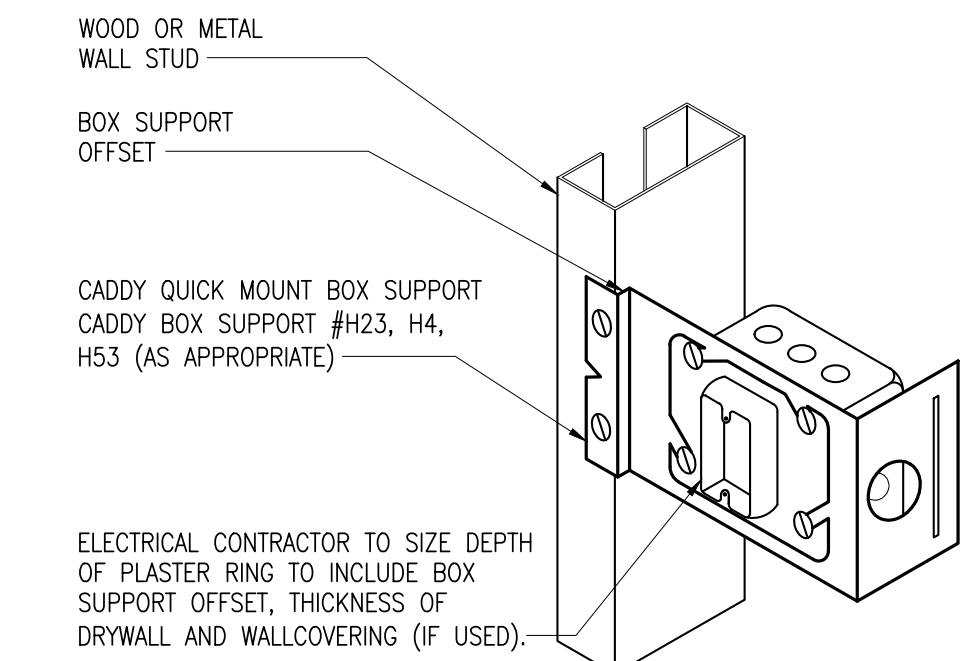
E501

OWNERSHIP USE OF DOCUMENTS:
AGP EXPRESSLY RESERVES ITS
RIGHTS OF ALL PLANS AND DRAWINGS
DESIGNED AND/OR PRODUCED. PLANS
AND DRAWINGS ARE NOT TO BE
REPRODUCED IN ANY FORM OR MANNER
WITHOUT THE EXPRESSED WRITTEN
CONSENT OF AGP.



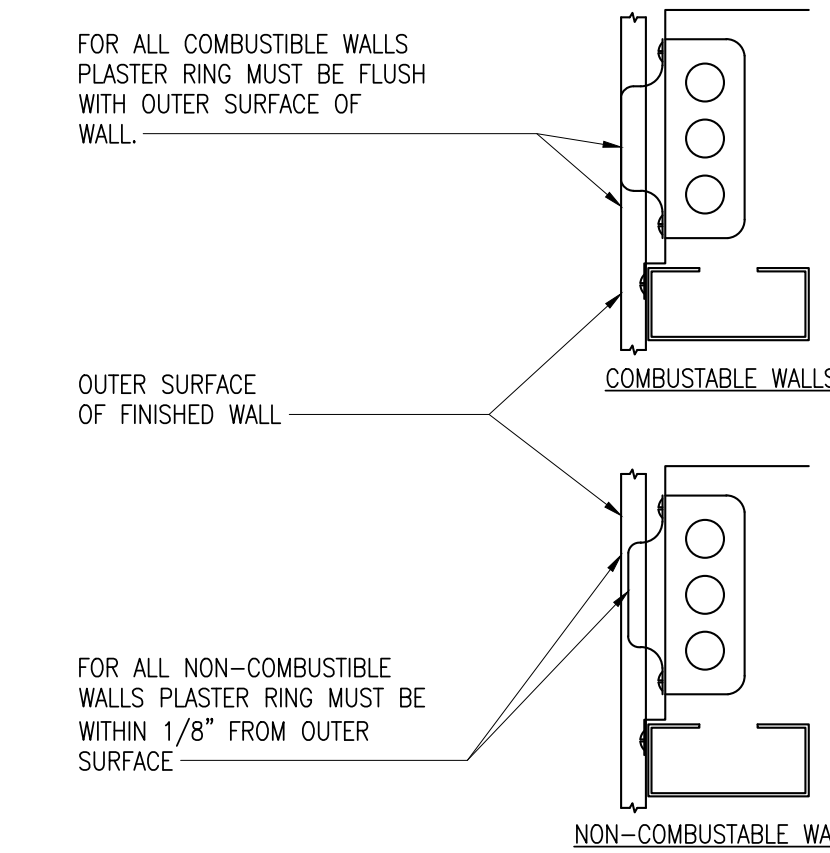
2600 Van Buren St., Suite 2635
Norman, Oklahoma 73072
P: 405.364.9926 | C/F: 71058 Expiration Date: 6/30/2023

Salas O'Brien Project No.: 2021-02932-00

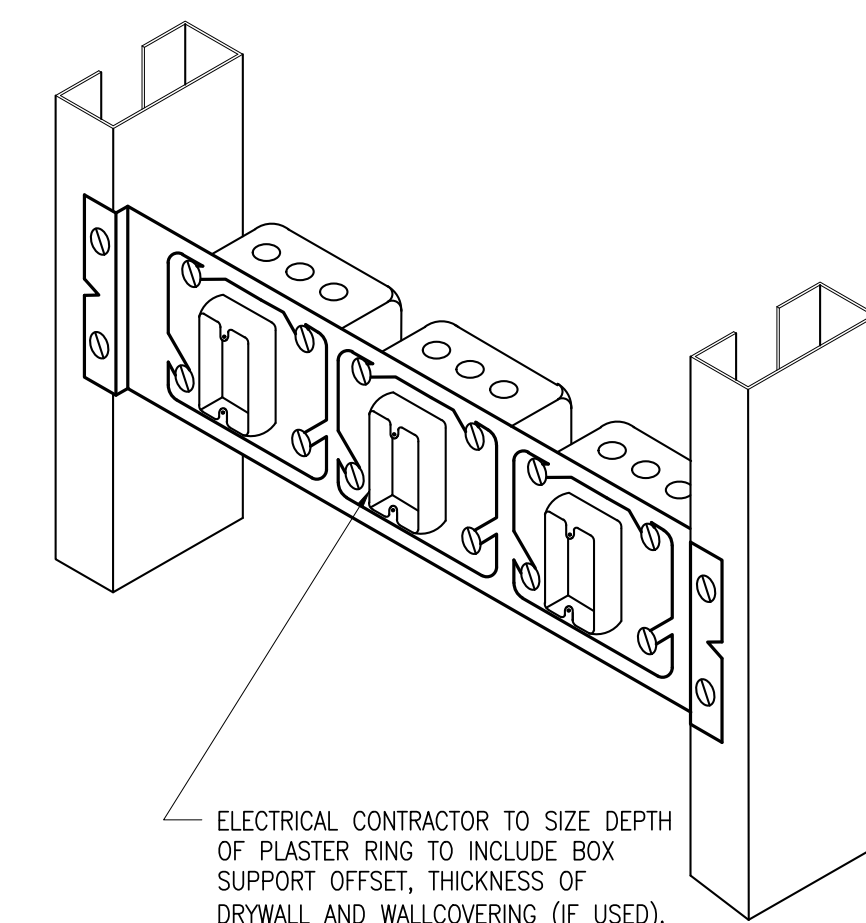


ELECTRICAL CONTRACTOR TO SIZE DEPTH OF PLASTER RING TO INCLUDE BOX SUPPORT OFFSET, THICKNESS OF DRYWALL AND WALLCOVERING (IF USED).

SOME EXAMPLES:
- 3/4" PLASTER RING FOR SINGLE LAYER 5/8" GYPSUM BOARD WALL FINISH
- 1" PLASTER RING FOR TWO LAYER WALL FINISH 1/2" OVER 1/4"

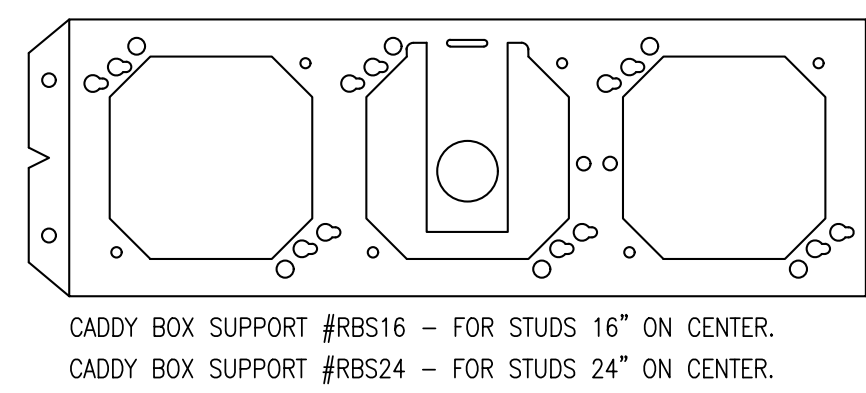


1 BOX SUPPORT DETAIL
NO SCALE

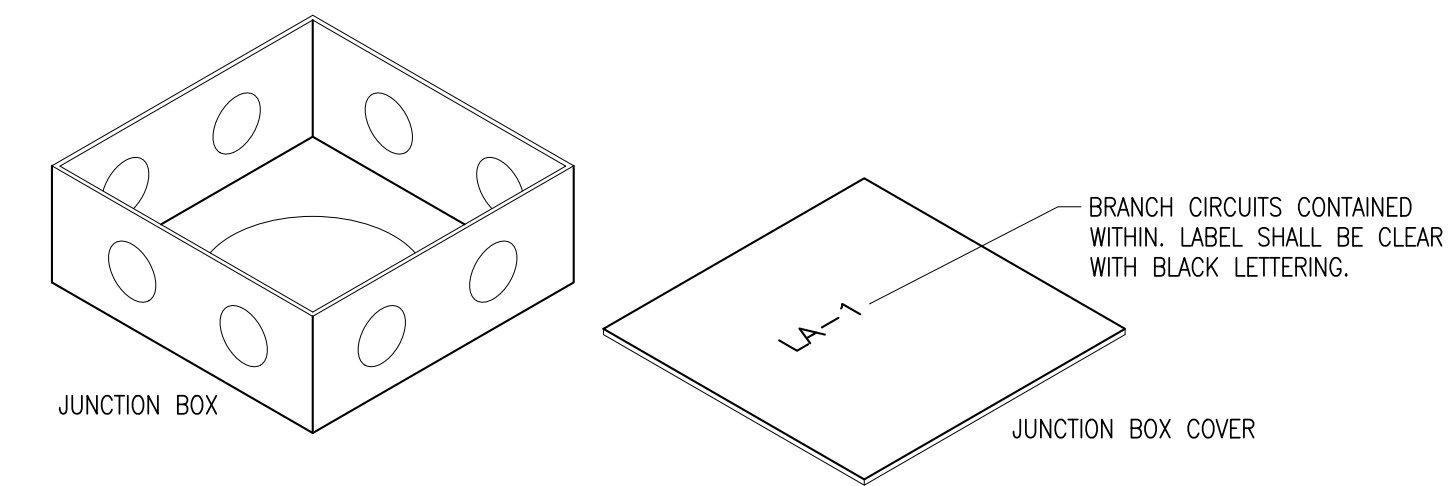


ELECTRICAL CONTRACTOR TO SIZE DEPTH OF PLASTER RING TO INCLUDE BOX SUPPORT OFFSET, THICKNESS OF DRYWALL AND WALLCOVERING (IF USED).

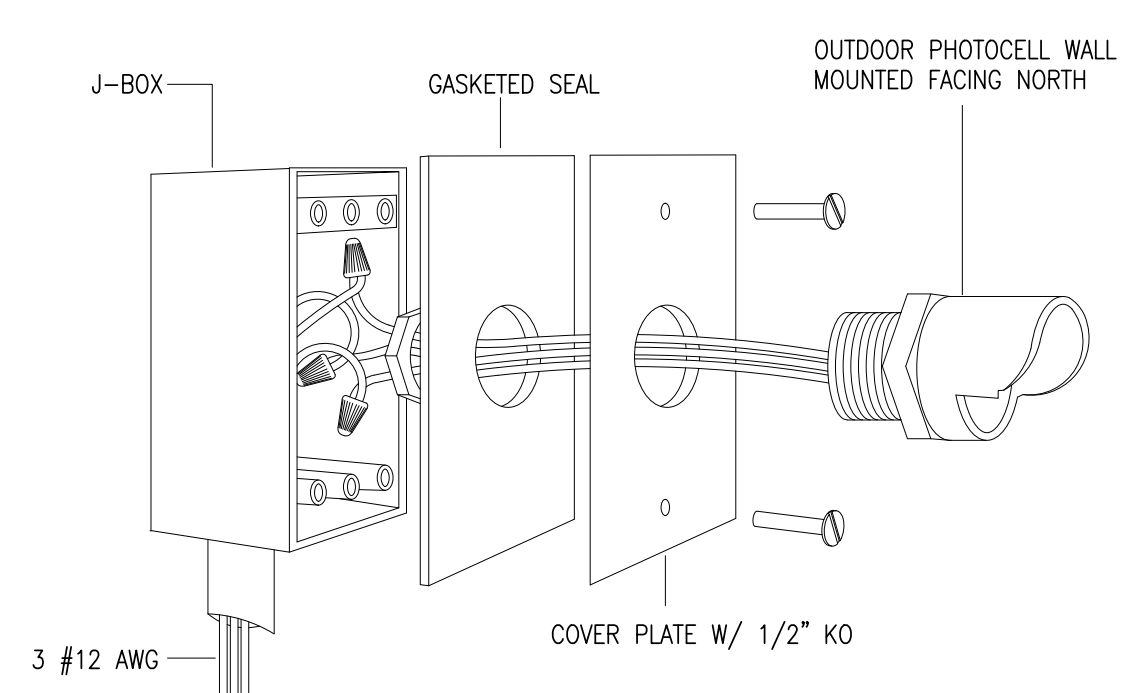
SOME EXAMPLES:
- 3/4" PLASTER RING FOR SINGLE LAYER 5/8" GYPSUM BOARD WALL FINISH
- 1" PLASTER RING FOR TWO LAYER WALL FINISH 1/2" OVER 1/4"



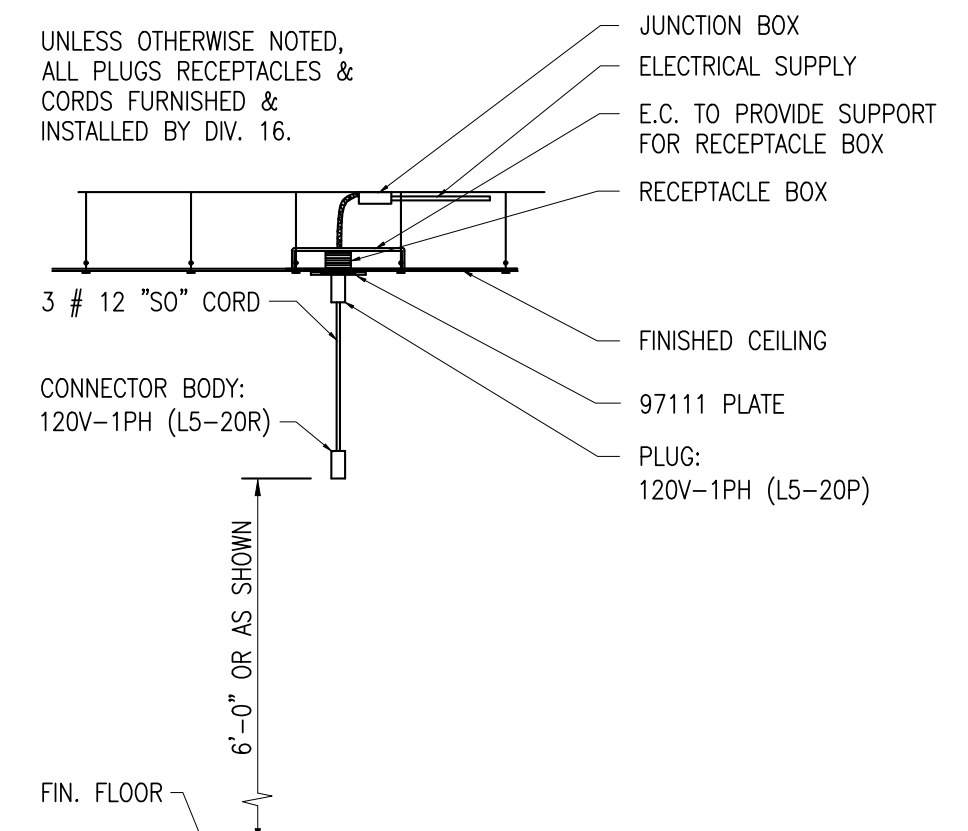
2 MULTIPLE BOX SUPPORT DETAIL
NO SCALE



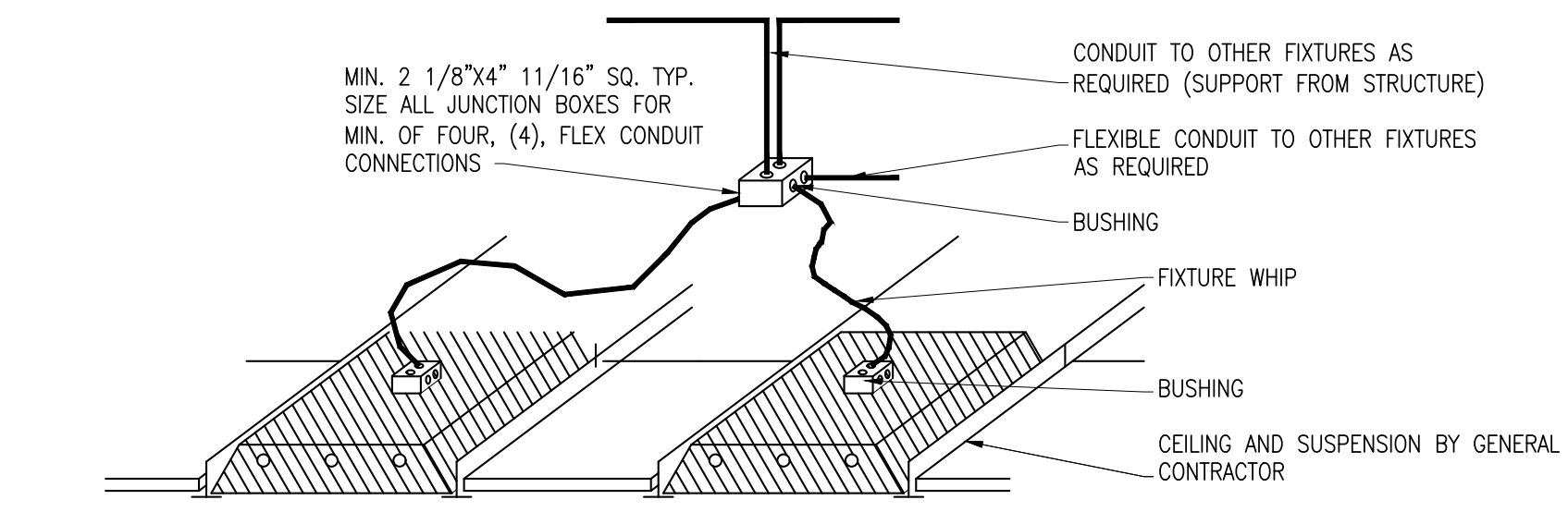
3 JUNCTION BOX DETAIL
NO SCALE



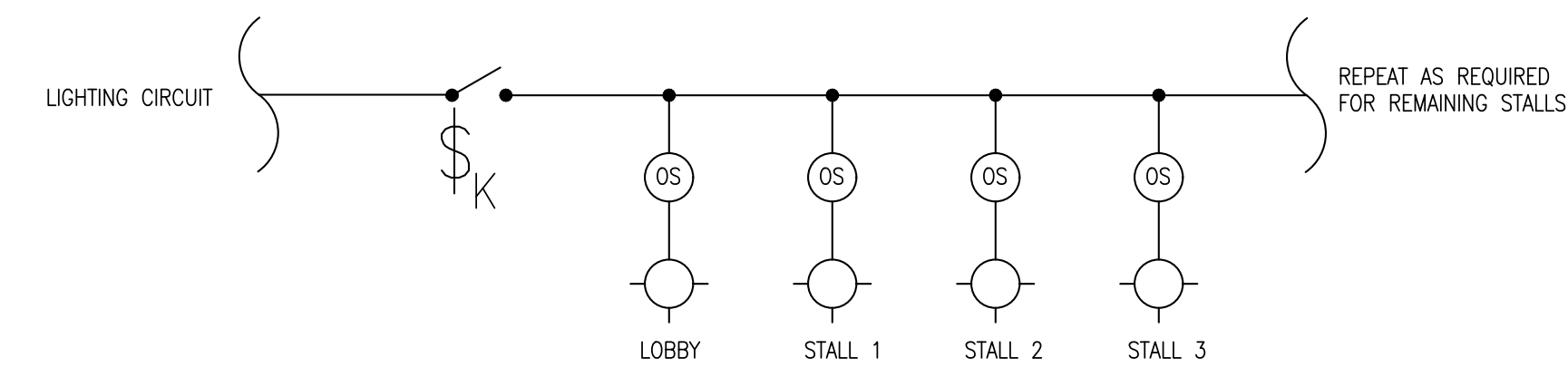
5 OUTDOOR PHOTOCELL
NOT TO SCALE



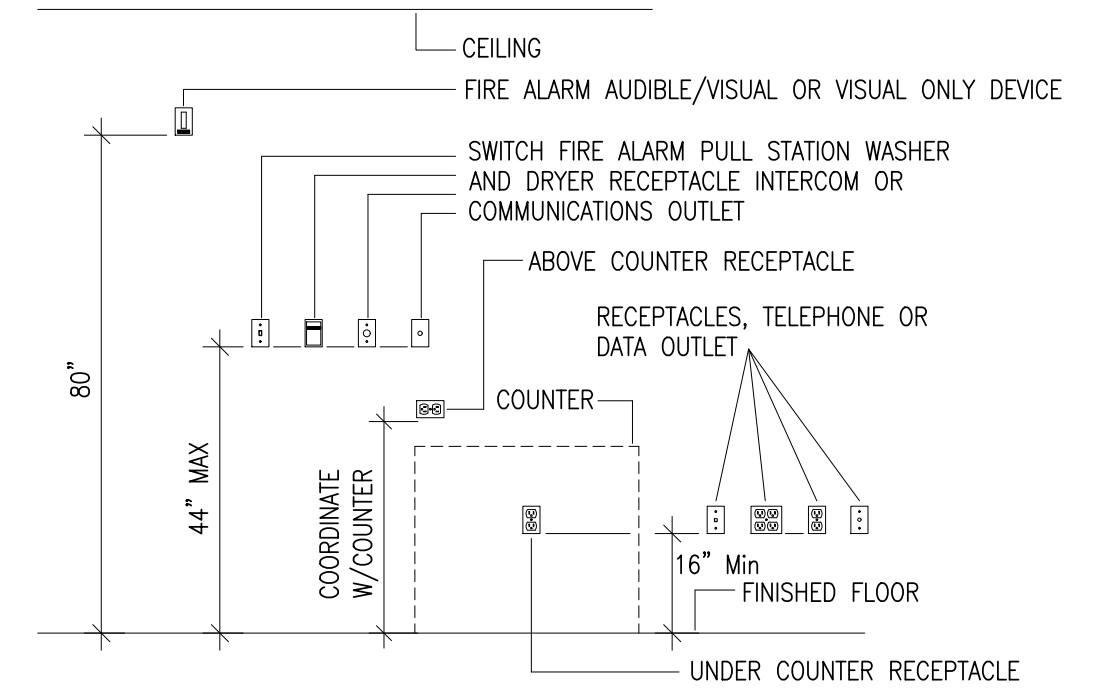
6 DROP CORD RECEPTACLE
NO SCALE



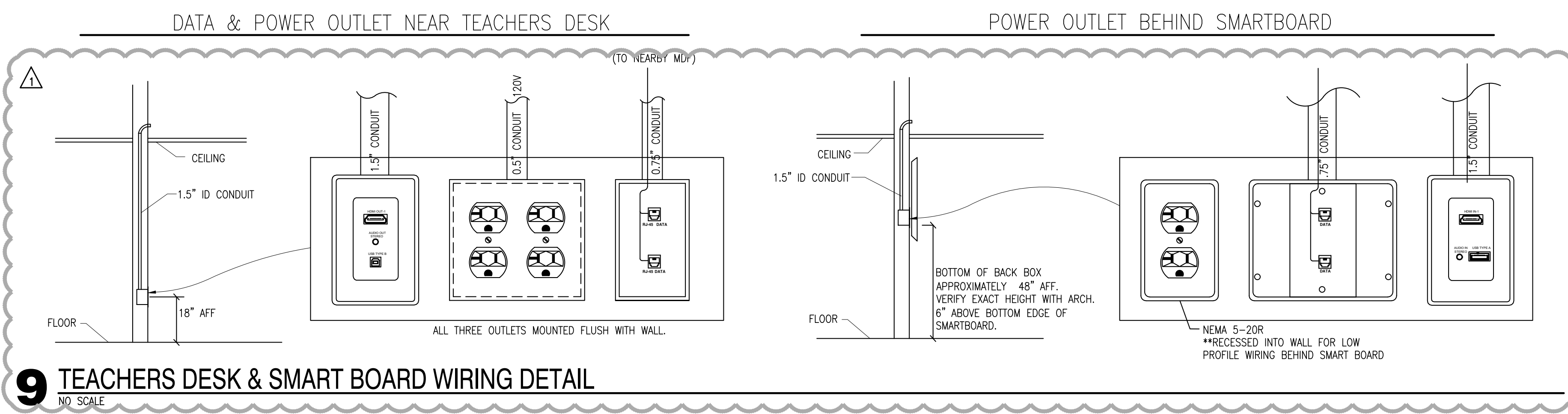
4 TYP. TROFFER POWER DETAIL
NOT TO SCALE



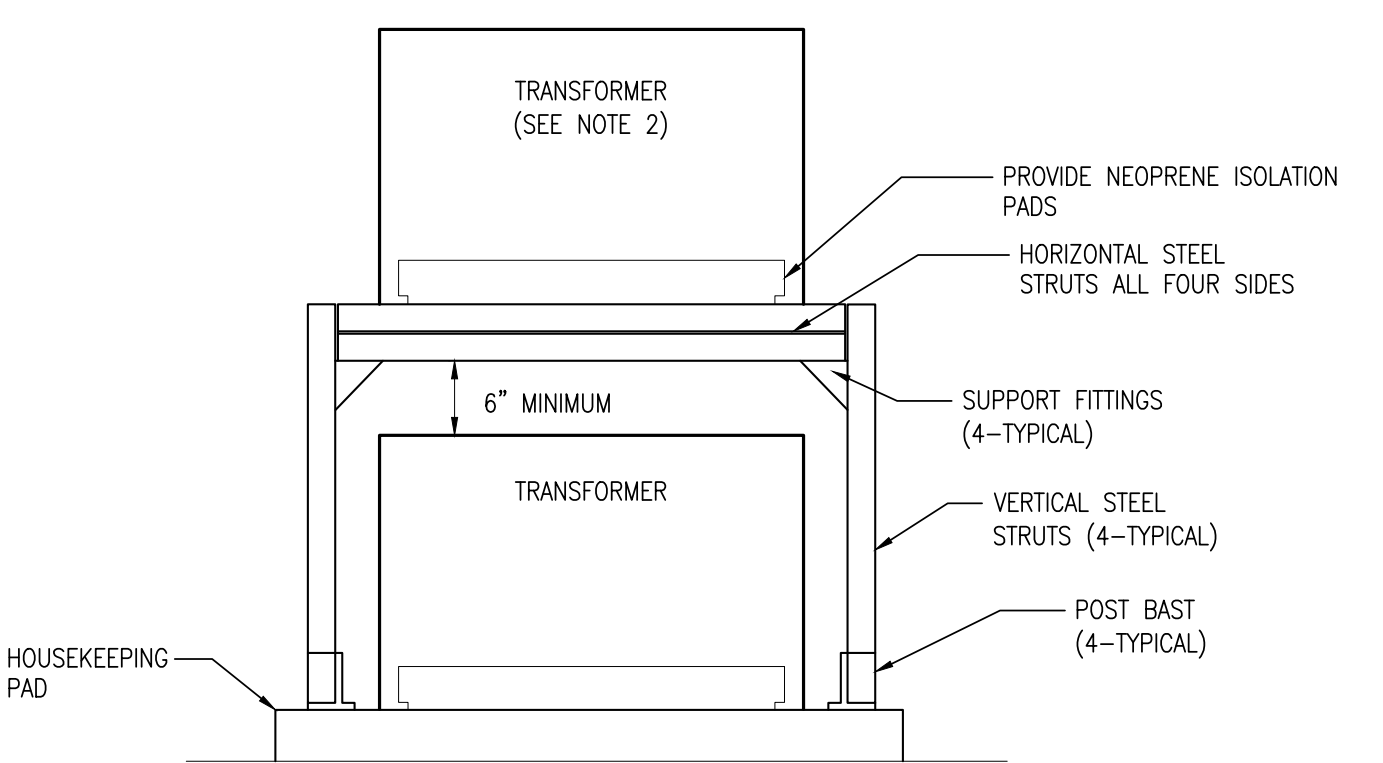
8 RESTROOM LIGHTING CONTROL DETAIL
NO SCALE



7 TYP. OUTLET MOUNTING DETAIL
NOT TO SCALE

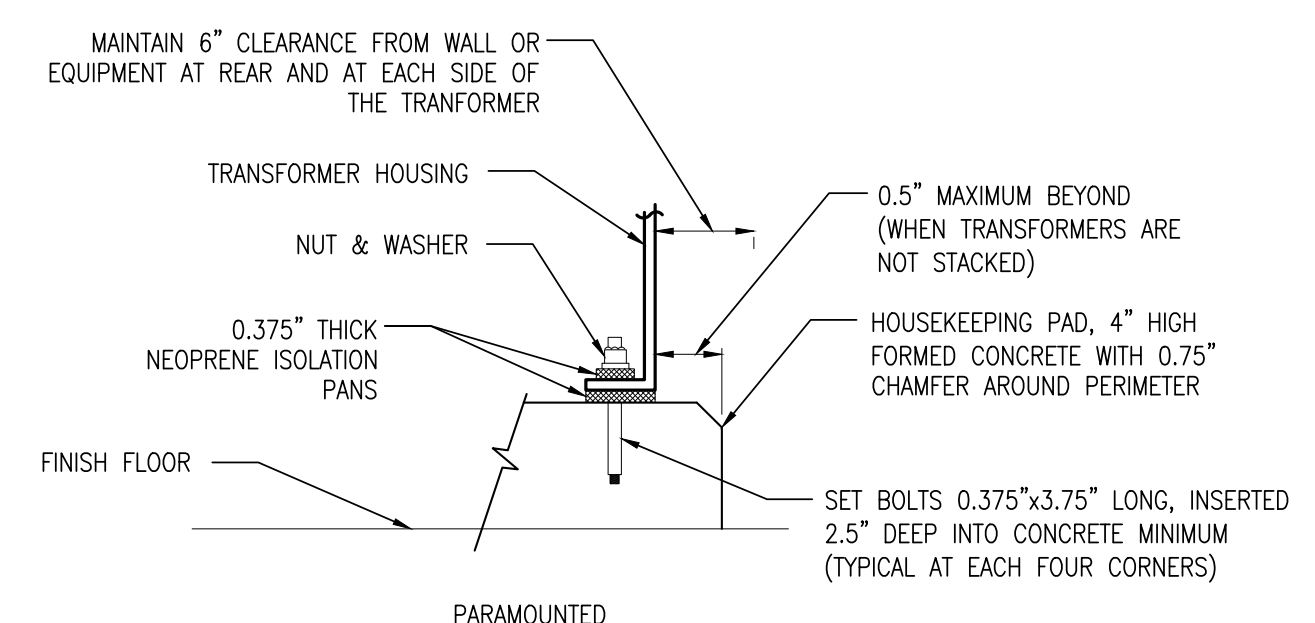


9 TEACHERS DESK & SMART BOARD WIRING DETAIL
NO SCALE



10 DRY-TYPE TRANSFORMERS - PAD MOUNTED AND CONCEPTUAL STACKED MOUNTING DETAIL
NOT TO SCALE

NOTES:
1. REFER TO STRUCTURAL DRAWINGS FOR MORE INFORMATION
2. THE SMALLER KVA SIZE TRANSFORMER SHALL BE INSTALLED ABOVE



2600 Van Buren St., Suite 2635
Norman, Oklahoma 73072
P: 405.364.9926 | C/F: 71058 Expiration Date: 6/30/2023

Salas O'Brien Project No.: 2021-02932-00